

# HORIZON



## Nationwide Push-to-Talk over Cellular (PoC) Communications

**HORIZON is a subscription-based Push-to-Talk Over Cellular (PoC) service that provides instant individual and group calling over the most advanced and reliable cloud-based communications network.**

HORIZON utilizes the 4G/5G/LTE cellular infrastructure of Mobile Network Operators and Wi-Fi networks to access the cloud-based PoC servers.

4G/5G/LTE cellular networks enable unlimited coverage area so radio users are untethered by the range of repeaters and base stations used in traditional radio networks.

HORIZON supports all of the rugged and feature-rich Hytera PoC devices and includes HORIZON Dispatch, a web-based dispatching application that enables centralized group calling and GPS location tracking.

**Instant Group Communication:** Group voice and video calling with team members across the country, enabling swift decision-making and response times.

**Efficient Collaboration:** Enhance teamwork and collaboration by providing a seamless platform for real-time communication among remote and dispersed teams.

**Increased Productivity:** Boost productivity by with voice and video communication happens at the push of a button, share images and videos, and run Android business apps.

**Cost-Efficiency:** Reduce communication costs significantly compared to traditional phone calls, leading to substantial savings for businesses and individuals.

**Reliable Communications:** The most dependable PoC services available with operational resilience through high redundancy and hot-host standby cloud servers for zero downtime.

## Look to HORIZON for Limitless Push-to-Talk Communications

# Hytera PoC Devices

Hytera provides a wide variety of PoC devices for operation on the HORIZON nationwide PoC system, including PoC handheld radios, PoC mobile radios, and PoC mobile computers.

- Industry-leading audio quality with AI-based digital noise suppression
- Longest battery life available
- Rugged and reliable
- Built in Wi-Fi, Bluetooth, and GPS



## HORIZON Key Features

### NATIONWIDE COVERAGE

- HORIZON leverages 4G/5G/LTE and Wi-Fi networks to provide secure and instant nationwide radio communications

### MOST RELIABLE POC SYSTEM AVAILABLE

- Advanced cloud servers provide the most reliable nationwide PoC services available
- Geo-diverse server redundancy and resiliency for the highest level of service availability

### GROUP AND INDIVIDUAL CALLING

- Instant one-to-one (individual) calls, or one-to-many (group) calls to different groups
- Quickly build dynamic call groups with a simple list selection or geographically by selecting an area on the dispatch map

### MULTIMEDIA COMMUNICATIONS

- PoC devices with cameras can initiate individual and group video calls, and take and share pictures with dispatch and other devices
- Users can communicate with each other and dispatch with free-form or pre-programmed text messages
- HORIZON Dispatch enables centralized video conferencing, sharing pictures with other PoC devices, and sending group texts

### NO INFRASTRUCTURE REQUIRED

- No need to purchase, operate, and maintain traditional radio network infrastructure
- No expenses related to owning radio equipment or FCC frequency licenses

### RAPID DEPLOYMENTS

- Since the radio network infrastructure already exists, PoC systems are very quickly deployed
- PoC radios work out-of-the-box with SIM cards pre-installed

### UNLIMITED CHANNELS AND BANDWIDTH

- The HORIZON PoC platform allows any number of virtual channels and as many call groups as required
- LTE networks also support bandwidth-hungry applications like user-initiated video calling

### GPS LOCATION TRACKING

- PoC devices with integrated GPS enable location tracking with the HORIZON Dispatch application
- Enables tracking of driver locations and travel routes with time stamps

### OPERATIONAL CONTROL

- Customer system management is available with a web based systems operations console for large enterprise customers that want comprehensive control over the PoC system and devices
- API available for customer app development
- Custom branding available for the dispatch app and app icons on devices

### SAFETY FEATURES

- Supports sending and receiving Emergency Alarms for enhanced worker safety
- Dispatcher can remotely monitor audio and video during emergency situations

# How HORIZON Works

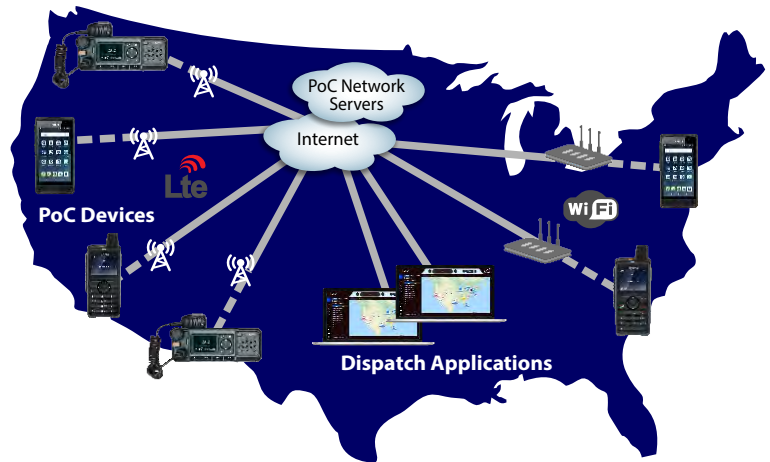
Hytera PoC devices access the HORIZON PoC server through the internet using 4G/5G/LTE cellular networks and Wi-Fi networks for wide-area radio communications.

PoC is also referred to as Radio over IP (RoIP). Similar to Voice over IP (VoIP), RoIP devices are handheld two-way radios that access cloud-based PoC services via the internet for voice and video calling. A data plan SIM card (similar to those used in cell phones) is installed in the PoC device to enable access to the internet using the 4G/LTE cellular infrastructure of Mobile Network Operators.

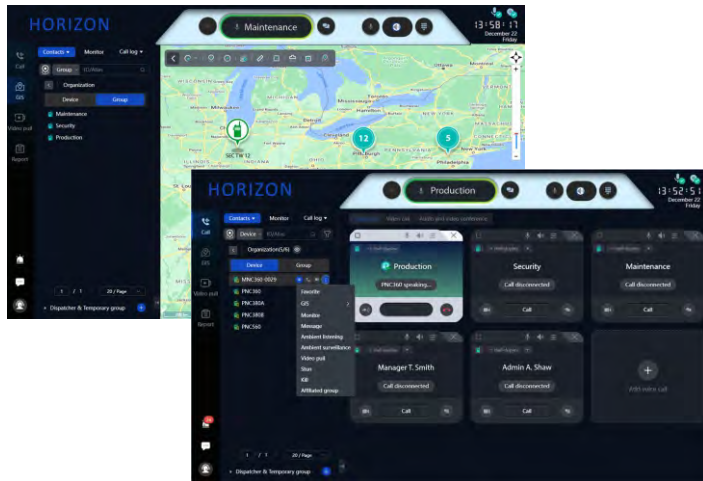
HORIZON services are hosted on the cloud using PoC servers (network appliances). Gateway routers provide connectivity between the 4G/LTE network and the cloud hosted PoC controller.

The result is access to existing and reliable networks that require no maintenance or operational expenses.

HORIZON Dispatch web browser applications also connect to the PoC cloud server through the internet.



## HORIZON Dispatch



The HORIZON PoC service includes HORIZON Dispatch, a powerful web-browser based dispatch application (for an additional low-cost license fee).

HORIZON Dispatch supports instant voice and video group calling as well as individual calling. Dynamic groups can be quickly created with a simple list selection or geographically by selecting an area on the dispatch map. HORIZON Dispatch leverages the GPS built into Hytera PoC devices for tracking of driver locations and travel routes with time stamps. The dispatcher may stun (turn off) and reactivate a radio, and receive and transmit emergency calls and text messages. HORIZON Dispatch includes comprehensive record storage and reporting of call logs, messages, along with emergency, geofence boundary, and speeding alarms.



**Hytera US Inc**  
8 Whatney, Irvine, CA 92618  
(954) 846-1011  
[www.hytera.us](http://www.hytera.us) [info@hytera.us](mailto:info@hytera.us)

